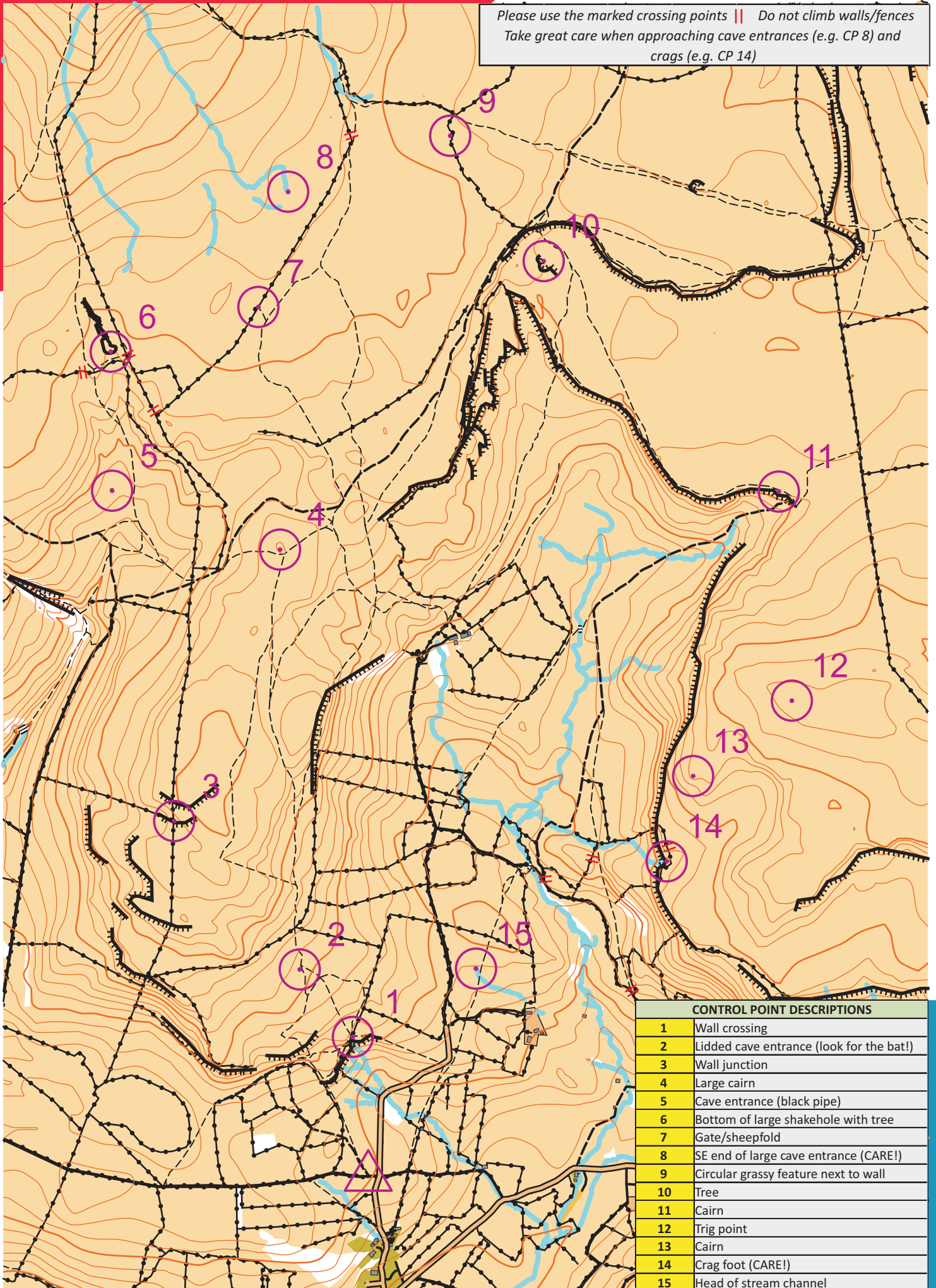


CAVES & CAIRNS

scale 1:20000, contours 10m
500m



Please use the marked crossing points || Do not climb walls/fences
Take great care when approaching cave entrances (e.g. CP 8) and
crag (e.g. CP 14)



CONTROL POINT DESCRIPTIONS	
1	Wall crossing
2	Lidded cave entrance (look for the bat!)
3	Wall junction
4	Large cairn
5	Cave entrance (black pipe)
6	Bottom of large shakehole with tree
7	Gate/sheepfold
8	SE end of large cave entrance (CARE!)
9	Circular grassy feature next to wall
10	Tree
11	Cairn
12	Trig point
13	Cairn
14	Crag foot (CARE!)
15	Head of stream channel